



CITY INVESTMENT TRAINING

FULL-TIME PROGRAM

**8 WEEKS
IN-CLASS / ONLINE**

**TRAINING PROGRAM THAT HELPS STUDENTS LAND JOBS
IN BANKING**



APPLICATION PROCESS

[Eligibility Calculator](#)



Take the Eligibility Score Assessment

- Start your journey by completing the “Banking Eligibility Calculator”
- **We are looking for a minimum of 40 on the eligibility calculator**

[JOIN WAITLIST](#)



Join the Waitlist -

- We will reach out for your CV is shortlisted



Phone/Face to Face Interview

- Final round interview with our CEO, Sameer Merchant



Receive Final Offer

- Successful candidates will receive an offer to join our program



SAMEER MERCHANT, CFA **CEO AND LEAD TRAINER:**

EDUCATION:



OFFERS



WORK EXPERIENCE:



OUR TRAINERS COMPRISE OF SENIOR BANKERS



DR KEN LEE
EX-HEAD of BARCLAYS
EUROPEAN EQUITY RESEARCH



ARGYRIS CHATZILLAS
EX HEAD of HSBC's PRIVATE EQUITY
& LEVERAGE FINANCE



GEORGE GALANOPOULOS
Partner: Venero Capital Advisors
EX- DIRECTOR OF M&A ROTHSCILD



Haresh Balani - Ex Hedge Fund Manager
Formerly at Bessent Capital & Cheyne Capital
Graduate of the Wharton School of Finance



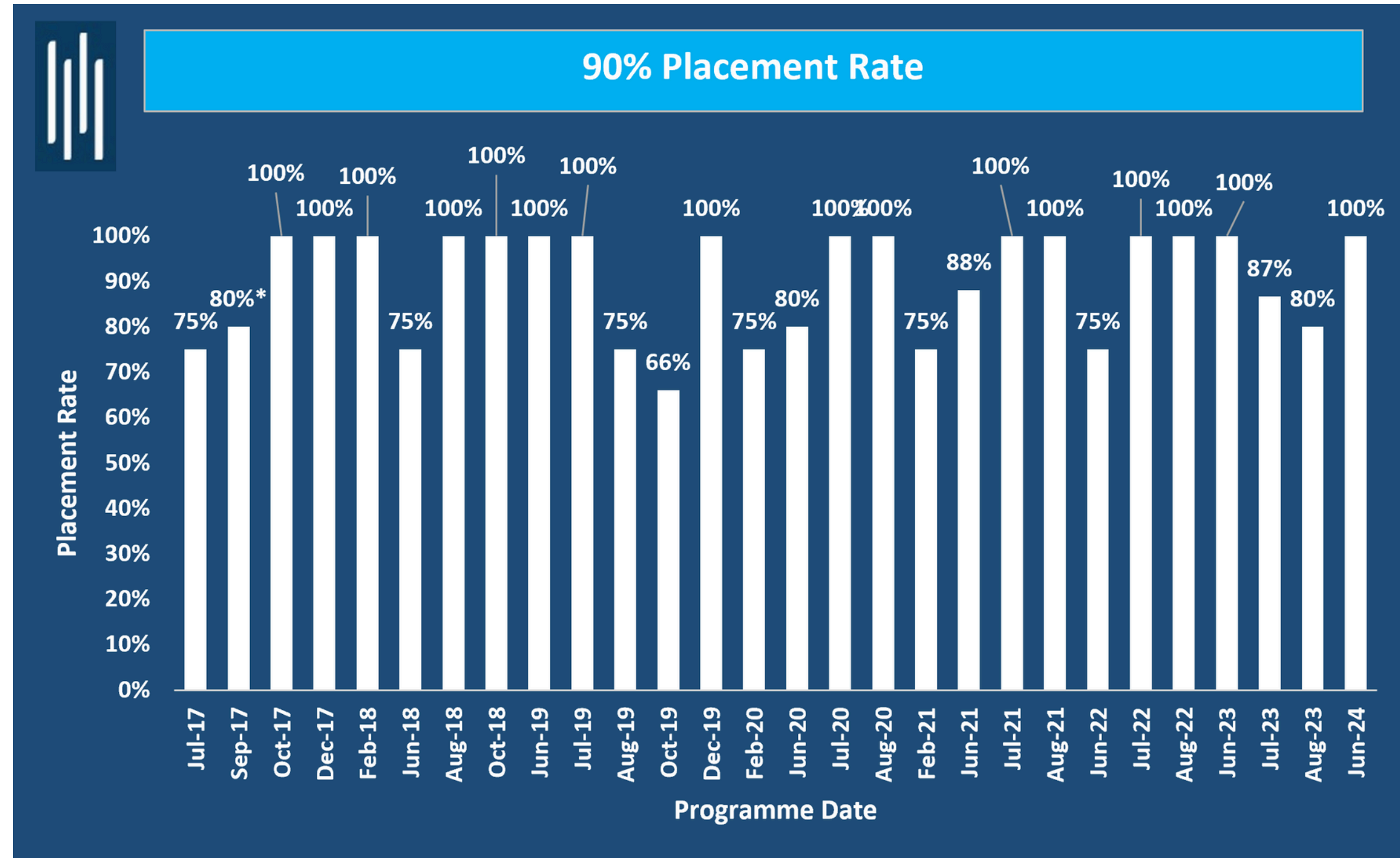
CITY INVESTMENT TRAINING

PLACEMENTS

BEST IN-CLASS PLACEMENT OF 90%

90% PLACEMENT RATE

CELEBRATING STUDENT SUCCESS SINCE 2017



*90% OF STUDENTS WHO ENTERED THE JOB MARKET IMMEDIATELY AFTER COMPLETING THE PROGRAM.



OUR STUDENTS WORK FOR MARQUEE INVESTMENT BANKS

BULGE BRACKET



PRIVATE EQUITY



LEADING BOUTIQUES



ASSET MANAGEMENT



CITY INVESTMENT TRAINING

PROGRAM CONTENT

8 WEEKS IN-CLASS / ONLINE

**TRAINING PROGRAM THAT HELPS STUDENTS LAND JOBS
IN BANKING**



WEEK 1 - ACCOUNTING 101

Accounting is the language of Business



OVERVIEW OF THE 3 FINANCIAL STATEMENTS



ADVANCED INCOME STATEMENT CONCEPTS

- REVENUE RECOGNITION METHODS
- TYPES OF DEPRECIATION
- HOW TO VALUE BUSINESSES USING INCOME STATEMENT



ADVANCED BALANCE SHEET CONCEPTS

- INVENTORY ACCOUNTING
- PP&E SCHEDULE
- LEASES



RATIO ANALYSIS



FINANCIAL MODELLING

WEEKS 2 & 3

Build a step by step Financial Model on BMW

- ✓ **SETTING UP A FINANCIAL MODEL**
- ✓ **BUILDING THE HISTORICALS FOR IS AND BS**
- ✓ **FORECASTING IS TO EBITDA**
- ✓ **BUILDING DETAILED SCHEDULES ON**
 - INVENTORY
 - SHAREHOLDERS EQUITY
 - PP&E AND INTANGIBLE ASSETS
 - DEBT
- ✓ **FORECASTING SMALLER LINE ITEMS ON BS**
- ✓ **FORECASTING CASH FLOW STATEMENT**
- ✓ **BALANCING THE FINANCIAL MODEL**



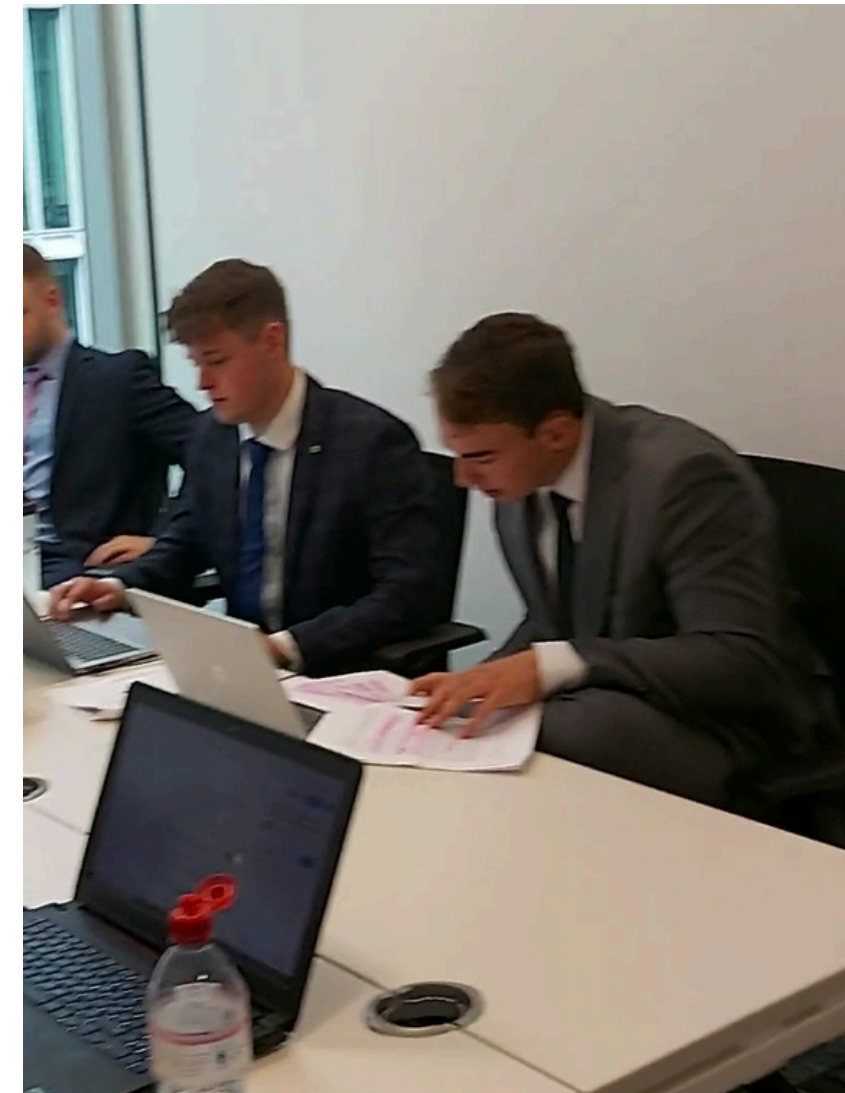
VALUATIONS - WEEK 4

We cover the waterfront of valuation techniques



DISCOUNTED CASH FLOW

- BUILDING FCFF
- FORECASTING FCFF
- CALCULATING WACC
 - COMPUTING COST OF EQUITY AND DEBT
- COMPUTING PV OF FCFF
- FINDING TERMINAL VALUE
- COMPUTING FAIR VALUE OF THE FIRM (EV)
- VALUING THE BUSINESS
- EVALUATING UPSIDE/DOWNSIDE





VALUATIONS - WEEK 4

Build LBO models like a private equity analyst



5 STEPS OF BUILDING A LBO MODEL

- BUILDING PRE TRANSACTION STRUCTURE OPERATING MODEL
- COMPUTE TRANSACTION STRUCTURE
- BUILDING POST TRANSACTION STRUCTURE OPERATING MODEL
- COMPUTE IRR
- OPTIMISE THE MODEL





VALUATIONS - WEEK 4

M&A Accretion/Dilution - BMW acquisition of Porsche



M&A ACCRETION/DILUTION ANALYSIS

- COMPUTING EPS FOR BMW'S ACQUISITION OF PORSCHE
- ADJUSTING EPS ACCRETION/DILUTION FOR ..
 - DEBT RELATED DEALS
 - WRITE UP OF PP&E
 - TRANSACTION AND OTHER RELATED FEES
 - UNDERSTANDING HOW EPS ACCRETION IMPACTS ACQUISITION DECISION





VALUATIONS - WEEK 4

COMPARABLE VALUATIONS



OPERATIONAL COMPS VERSUS FINANCIAL COMPS



PUBLIC AND TRANSACTION COMPS USING...

1. PE

2. EV/EBIT

3. EV/EBITDA

4. EV/REVENUE

5. EV/SUBSCRIBERS



CITY INVESTMENT TRAINING

SECOND FOUR WEEKS

INTERNSHIP TRAINING

Replicating and building on real-life internships





M&A WEEK (WEEK 5)



NEGOTIATE REAL-LIFE M&A DEALS

- ✓ **WRITE A DETAILED M&A PITCHBOOK ON REAL-LIFE DEALS**
- ✓ **REPLICATE THE ROLE OF AN M&A ANALYST ADVISING MARS CHOCOLATE ON THE ACQUISITION OF WRIGLEY**
- ✓ **CALCULATE M&A GOODWILL USING THE PPA METHOD ON THE ACQUISITION OF TIME WARNER BY AOL**



EQUITY RESEARCH WEEK

(WEEK 6)



BUILD DETAILED FINANCIAL MODELS

- ✓ **WRITE A DETAILED EQUITY RESEARCH REPORT**
- ✓ **BUILD AN ADVANCED BMW FINANCIAL MODEL WITH A DETAILED REVENUE BREAKDOWN SHEET**
- ✓ **VALUE BMW USING SUM OF THE PARTS METHOD**
- ✓ **USE ADVANCED TECHNIQUES TO COMPUTE VALUATIONS OF FAST GROWING INTERNET STOCKS**



PRIVATE EQUITY WEEK

(WEEK 7)

NEGOTIATE REAL-LIFE PE DEALS

- ✓ **SPEND A WEEK REPLICATING THE ROLE OF A PRIVATE EQUITY ANALYST AT BAIN CAPITAL/KKR'S ACQUISITION OF TOYS R US**
- ✓ **BUILD A DETAILED TEN SPREADSHEET LBO MODEL AND MAKE A PRESENTATION TO THE INVESTMENT COMMITTEE ON THE ATTRACTIVENESS OF TOYS R US AS AN LBO TARGET.**





VENTURE CAPITAL WEEK

(WEEK 8)

NEGOTIATE VC DEALS

- ✓ **PUT TOGETHER TERM SHEETS AND CAP TABLES FOR FOLLOW ON INVESTMENTS IN WEBTRACKER.**
- ✓ **CALCULATE START-UP VALUATIONS FOR NORDIC TECHNOLOGIES**
- ✓ **NEGOTIATE WITH FELLOW STUDENTS ON RAISING FUNDS FOR NORDIC TECHNOLOGIES AND WEBTRACKER**





HOW WE PLACE STUDENTS?

PLACEMENT ASSISTANCE

- ✓ **CV & CL WORKSHOP**
- ✓ **MOCK INTERVIEWS AND COACHING**
- ✓ **NETWORKING EVENTS**
- ✓ **PROPREITARY JOB PORTAL**
- ✓ **LINKEDIN MASTERCLASS - USING LINKEDIN OUTREACH TO SECURE BANKING JOBS**
- ✓ **BOUTIQUE CLIENTS THAT HIRE FROM CITY INVESTEMENT TRAINING**



MOCK INTERVIEWS



FIRST MOCK INTERVIEW WITH SAMEER TO PREPARE STUDENTS FOR SENIOR BANKERS



STUDENTS CHOSE FROM SENIOR BANKERS SPECIALISING IN..



M&A



PORTFOLIO MANAGEMENT



PRIVATE EQUITY AND



EQUITY RESEARCH



GEORGE G MOCK INTERVIEW



CV WORKSHOPS



CREATING A BANKING FOCUSED CV WORKSHOP



20-30 MINS 1 ON 1 CV WORKSHOP WITH SAMEER



HOW TO USE AI TO WRITE A KILLER BANKING CV



LEARN FROM PAST CVS THAT MADE IT TO..



GOLDMAN SACHS



JP MORGAN



UBS



MORGAN STANLEY



AND MANY OTHERS



ALUMNI EVENTS

City Investment Training Turns 5
INAUGURAL ALUMNI EVENT

OUR SPEAKERS

TAHA EL MOUSSALI
HSBC (M&A)

AMELIA COOK
Lincoln International (M&A)

HAKON AASTERUD
Silversky Investments
(Venture Capital)

ARSLAN ZAFAR
Numis (Asset management)

ALI ABBAS PANJU
Social Capital (Private Equity)

HANAAAN NAZIR
Canaccord (M&A)

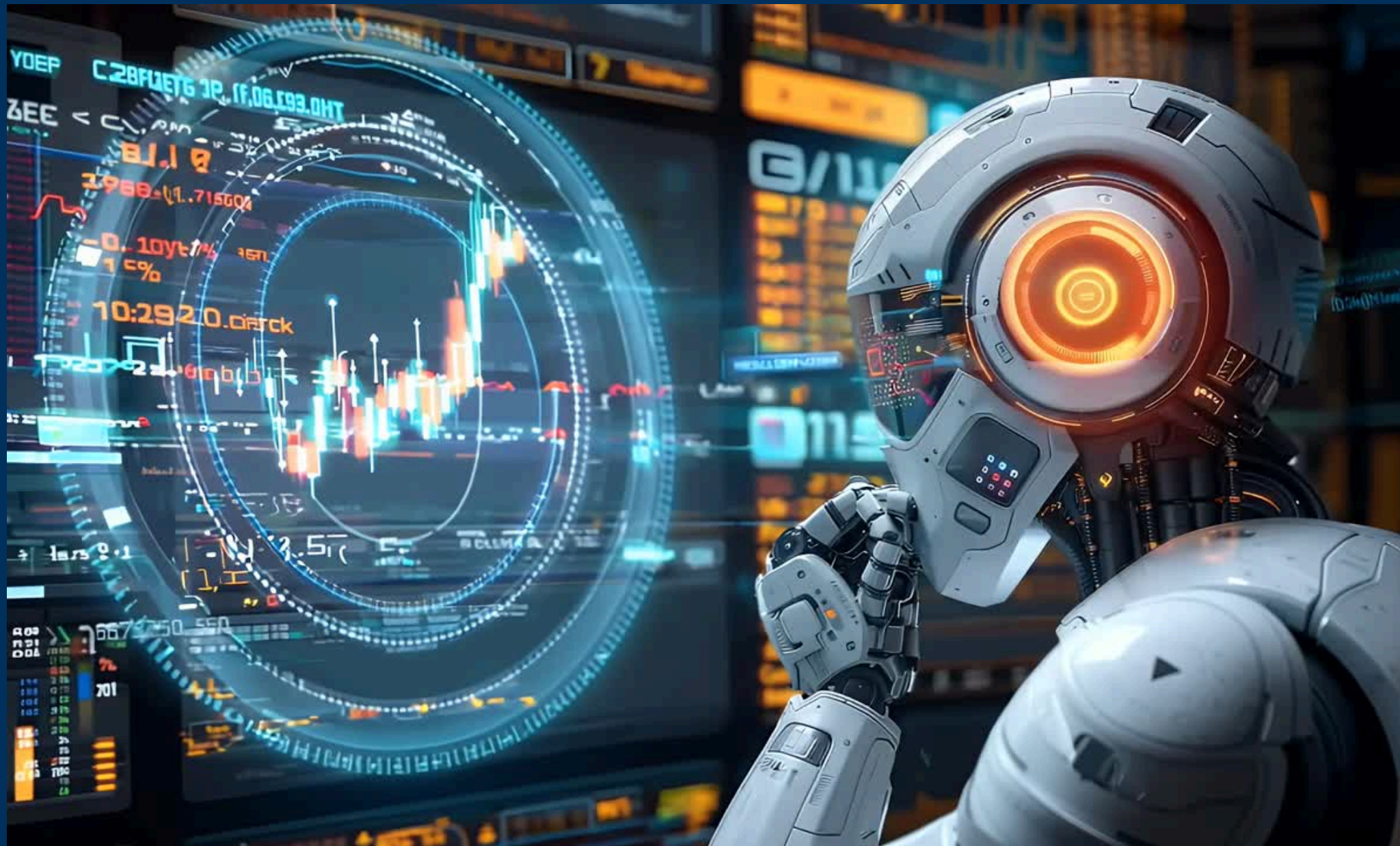
SATURDAY 6TH AUGUST AT 4PM, MARRIOTT CANARY WHARF



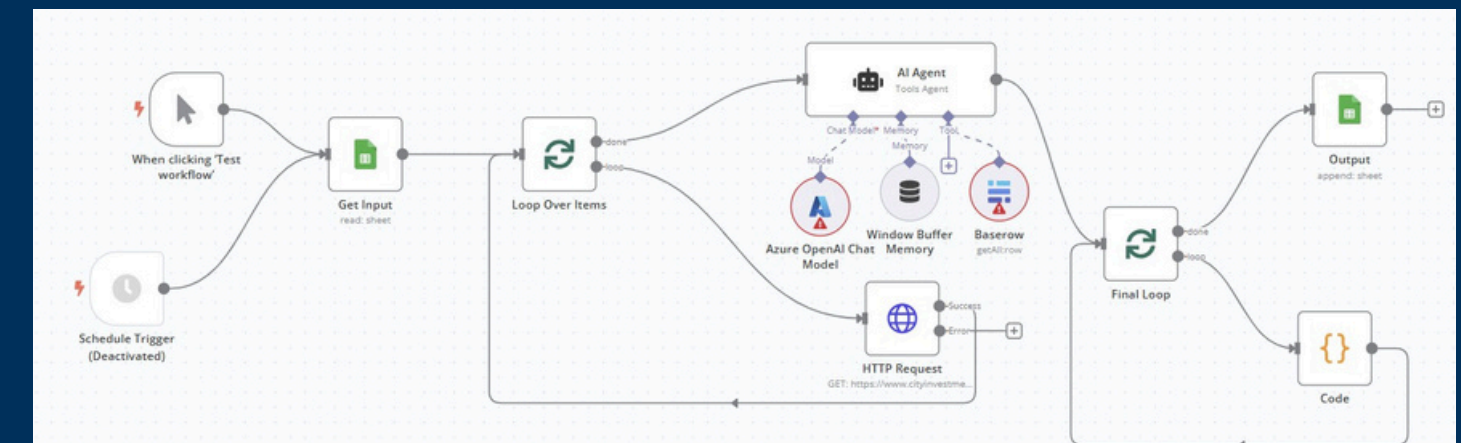


CITY INVESTMENT TRAINING

HOW WE USE AI ?



USING AI TO MAKE OUR STUDENTS STAND OUT IN A COMPETITIVE MARKET





HOW WE USE AI?



AI JOBS TRACKER



AI ASSESSMENT CENTRE



AI LINKEDIN NETWORKER



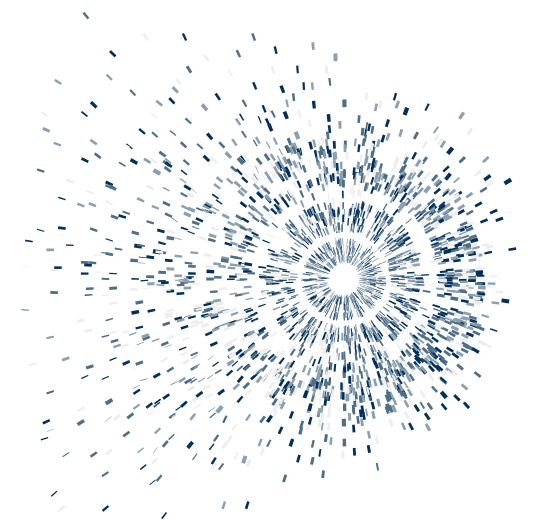
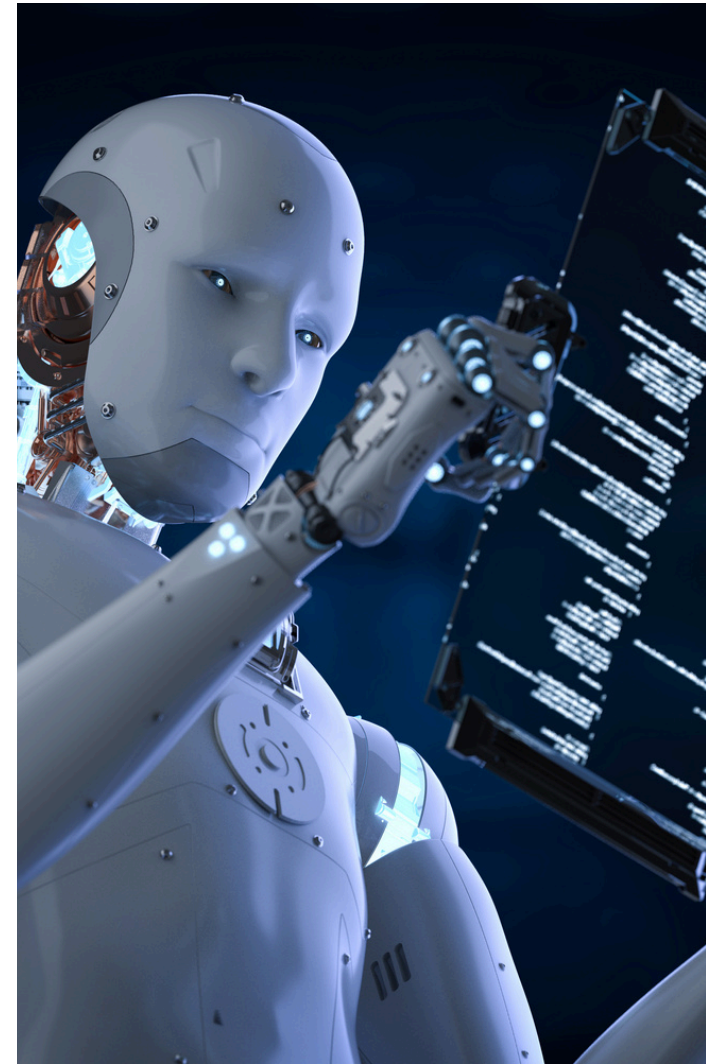
AI FINANCIAL MODELLING



AI EQUITY RESEARCH



AI DEAL SOURCING - M&A/PE

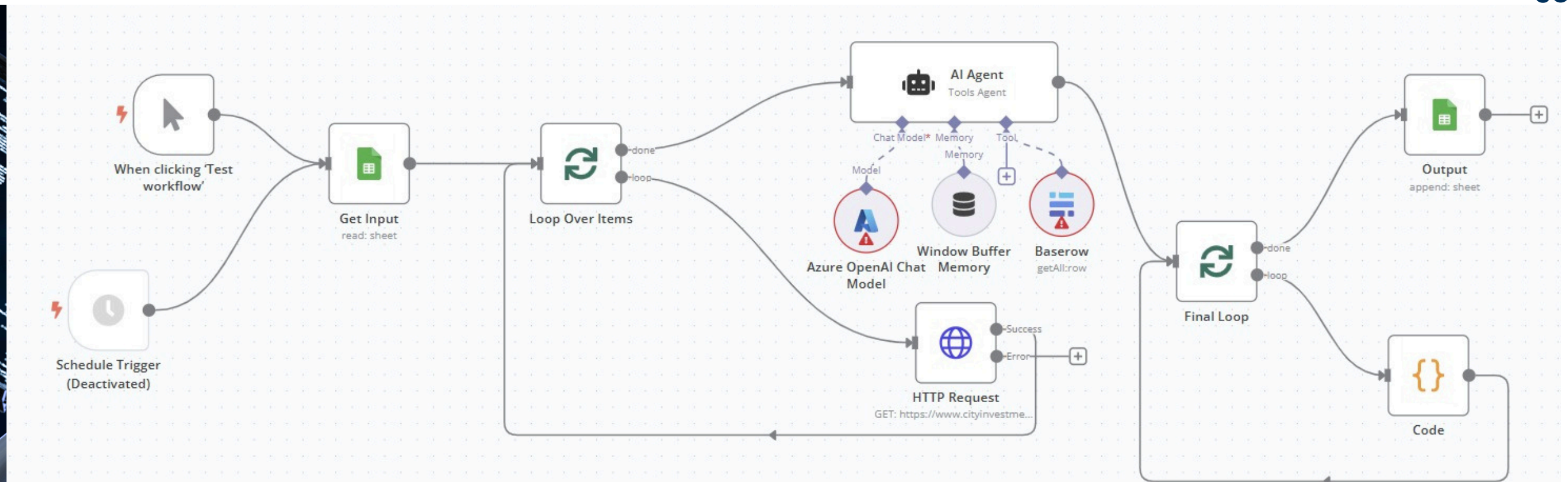




AI JOBS TRACKER

🎯 How it works?

- Smart AI BOTS 🤖 scan the entire web 24/7
- Azure OpenAI filters the best matches
- Custom AI checks quality & fit
- You get instant notifications!





AI FOR LINKEDIN

How it works?

LIST OF FIRM

>2,000 BANKS

GS
UBS
MS
BOA
BARCLAYS
HSBC
ROTHSCHILD
BERENBERG
JP MORGAN
.....

BANKERS

>10K BANKERS



JOHN SMITH

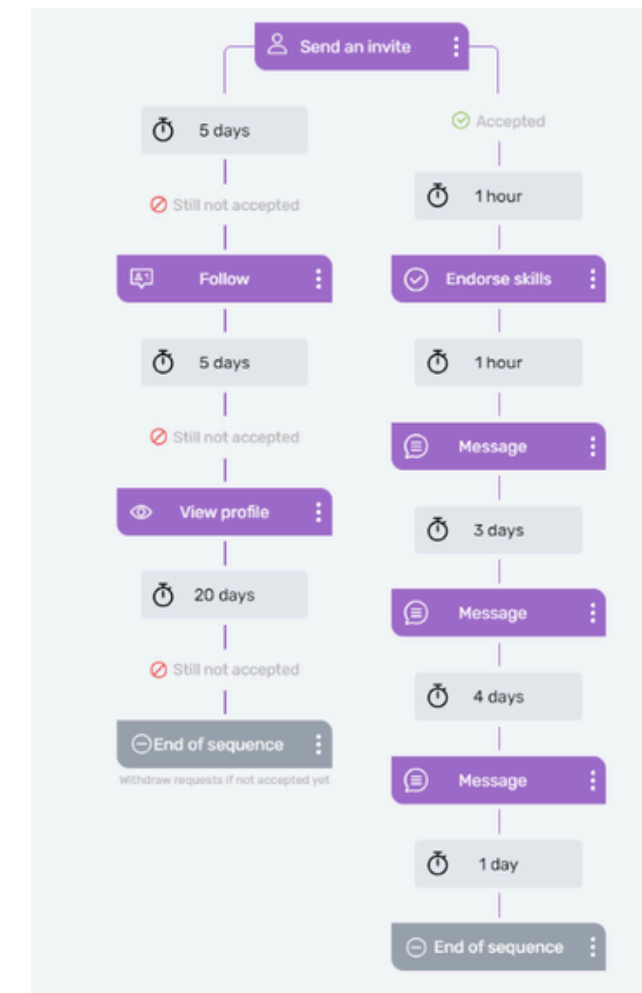


RAY D



STEVE S

AUTOMATION

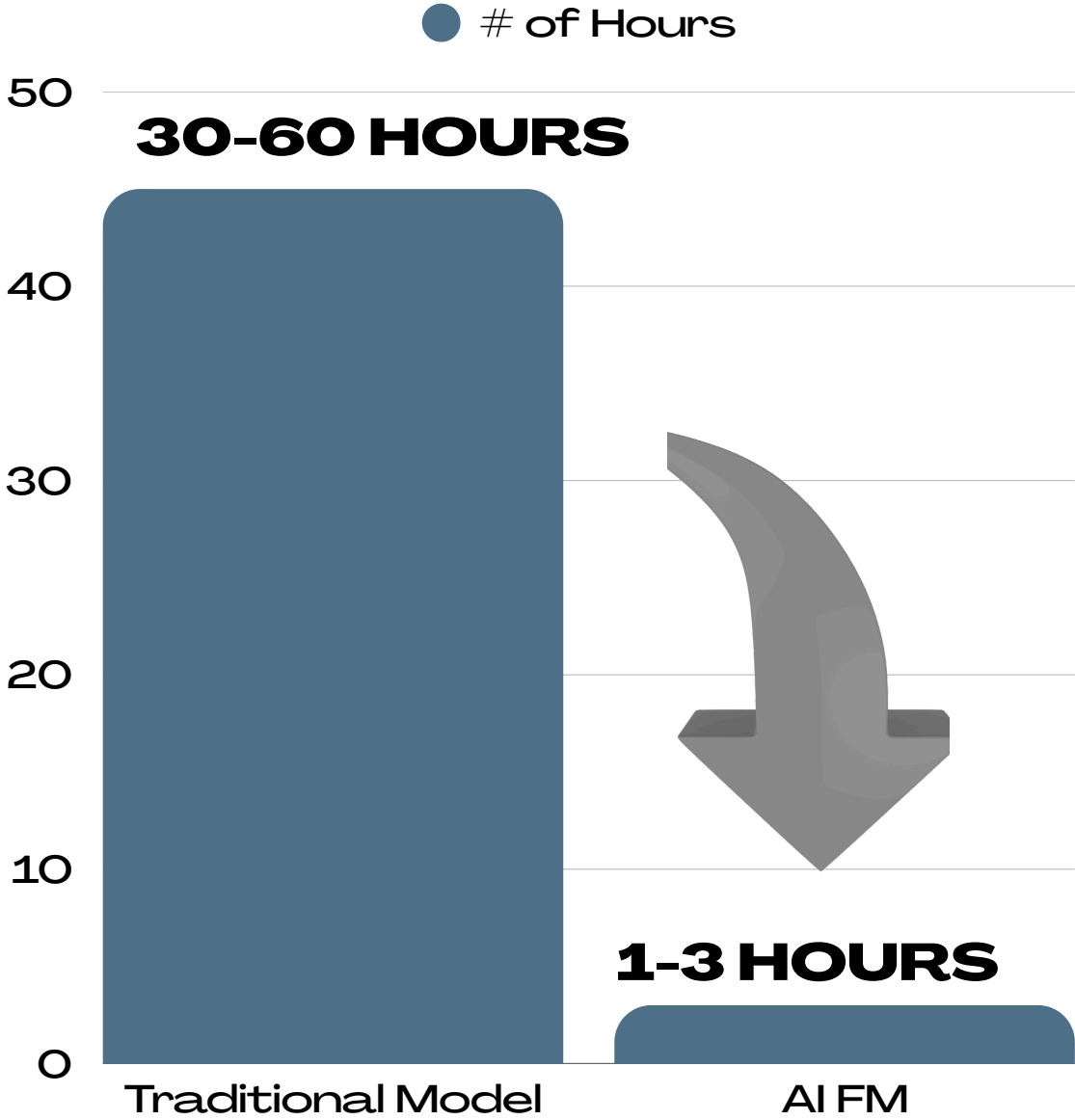


RESULT

- 800 CONNECTION REQUESTS
- 200 CONNECTIONS
- 2-5 CONVOS
- 1-2 JOB OFFERS



AI FINANCIAL MODELING



A	B	C	D	E	F	G	H	I	J	K	L
Apple Inc. Income Statement											
(In \$ millions, except number of shares which are reflected in thousands and per share amounts)											
		2016	2017	2018	2019	2020	2021E	2022E	2023E	2024E	2025E
Net sales		215,639	229,234	265,595	260,174	274,515	337,582	367,846	383,380	419,196	438,000
Cost of sales		131,376	141,048	163,756	161,782	169,559	196,643	212,323	217,931	234,962	240,000
Gross margin		84,263	88,186	101,839	98,392	104,956	140,939	155,524	165,449	184,234	197,000
Operating expenses:											
Research and development		10,045	11,581	14,236	16,217	18,752	23,631	25,749	26,837	29,344	30,000
Selling, general and administrative		14,194	15,261	16,705	18,245	19,916	25,319	27,588	28,754	31,440	32,000
Total operating expenses		24,239	26,842	30,941	34,462	38,668	48,949	53,338	55,590	60,783	63,000
Operating income		60,024	61,344	70,898	63,930	66,288	91,990	102,186	109,859	123,450	133,000
Depreciation & Amortisation		10,505	10,157	10,903	12,547	11,056	10,662	10,997	11,541	12,086	12,000
EBITDA		70,529	71,501	81,801	76,477	77,344	102,652	113,182	121,400	135,536	146,000
Other income/(expense), net		1,348	2,745	2,005	1,807	803	698	716	738	906	1,000
Income before income taxes		61,372	64,089	72,903	65,737	67,091	92,688	102,902	110,596	124,356	135,000
Provision for income taxes		15,685	15,738	13,372	10,481	9,680	13,373	14,847	15,957	17,942	19,000
Net income		45,687	48,351	59,531	55,256	57,411	79,315	88,055	94,639	106,414	115,000

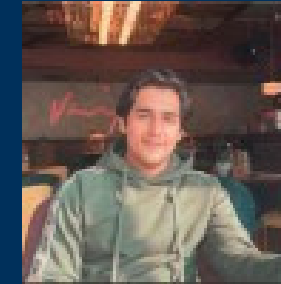


CITY INVESTMENT TRAINING

SAMPLE STUDENTS LIST

OUR STUDENTS WORK FOR THE MOST PRESTIGIOUS INVESTMENT BANKS IN THE WORLD

**** We will be happy to put any student who gets an offer to join one of our longer courses in touch with our ex-students mentioned on this list





STUDENT SUCCESS - WE'VE PLACED HUNDREDS OF STUDENTS

1

Jack



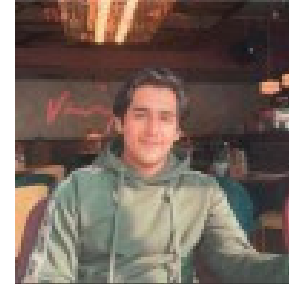
Goldman Sachs

David

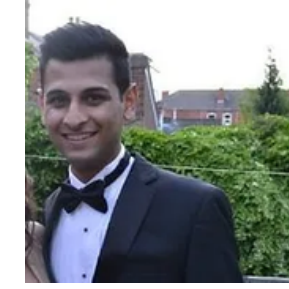


Goldman Sachs

Sahil



Amar



Sam



Andrea M



Olivier M



Julius Bär

www.juliusbaer.co

George M



Houlihan Lokey

William D



Abhay G



TORCH PARTNERS

Jack L



J.P.Morgan

Carolina



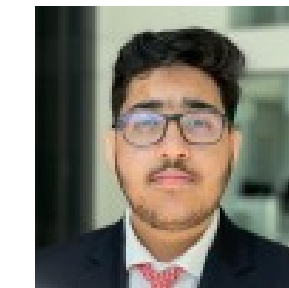
Morgan Stanley

Alejandra



BainCapital PRIVATE EQUITY

Mohammad A Rees

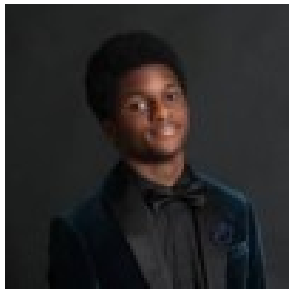


*These are companies that students are currently or previously worked for after graduating from City Investment Training



STUDENT SUCCESS - WE'VE PLACED HUNDREDS OF STUDENTS

Nifemi O



Rushil



Todor



Vinay



Abheek



Gustavo V



Thomas B



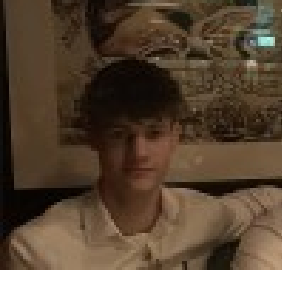
Joseph K



Paul



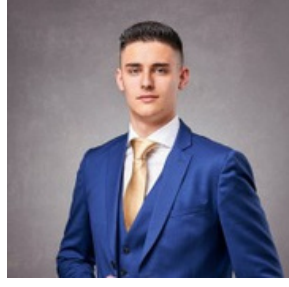
Luan H



Alexander



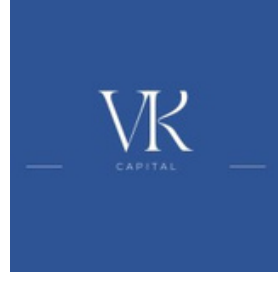
Alexius



Alberto Y



Catriona



Chenyao W





STUDENT SUCCESS - WE'VE PLACED HUNDREDS OF STUDENTS

3

Oksana



Francesco



Jakub



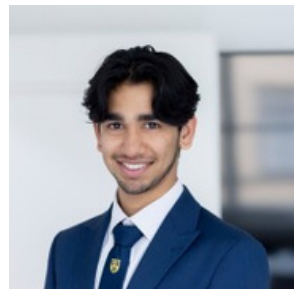
Josh B



Joshua H



Mayank N



Rikardas K



Reevo



Carmen



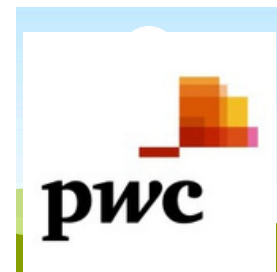
Luke



Amarthya



Simeon P



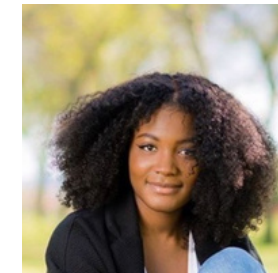
Farrukh



Eugene N



Djenebou





STUDENT SUCCESS - WE'VE PLACED HUNDREDS OF STUDENTS

4

Matteo



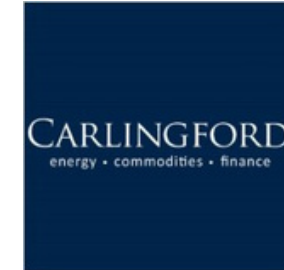
Freddie W



Adriano



Eitan



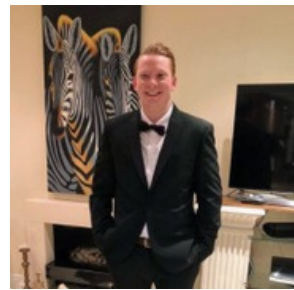
Dhian S



Makhan N



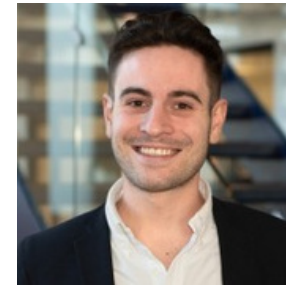
Jordan M



Thomas



Jorgen R



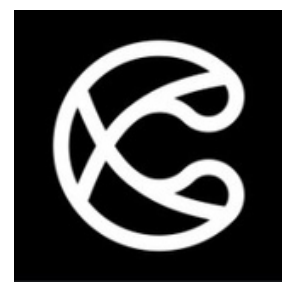
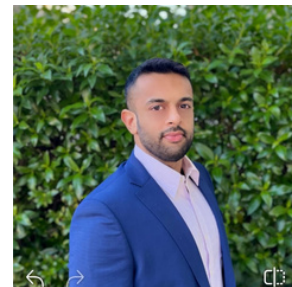
Håkon A



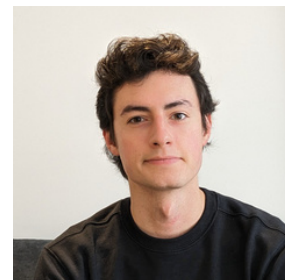
Louis M



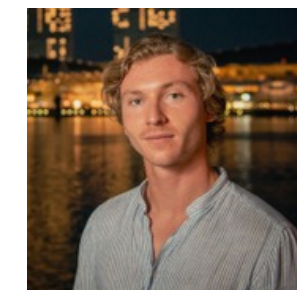
Ali



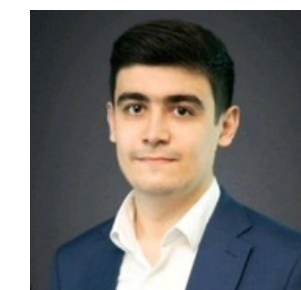
Sean K



Ruben V



Shamil





STUDENT SUCCESS - WE'VE PLACED HUNDREDS OF STUDENTS

Eliza M



Ben



Georgina



Jeyhan



Macarena



Daiyin C



Han



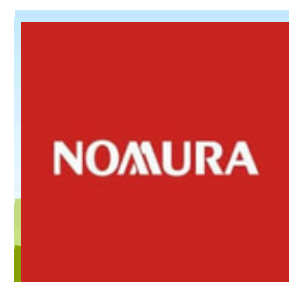
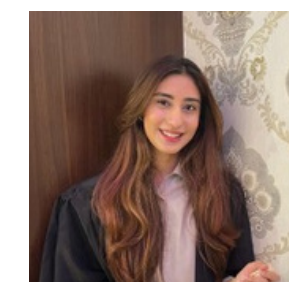
Jarno C



Tom K



Tooba Q



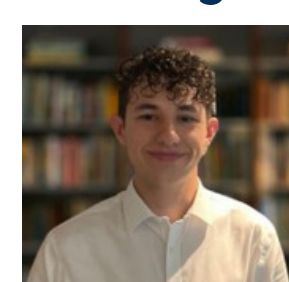
Vinay S



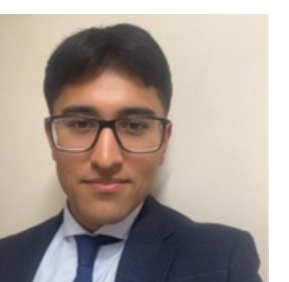
Henrique



Harry S



Harminderl U



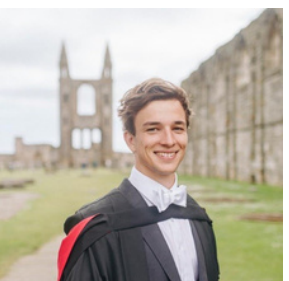
Malene N



Guillen T



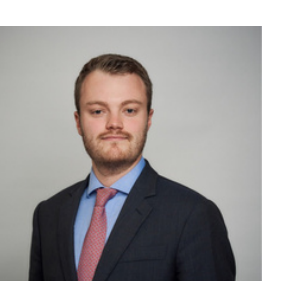
Harry C



Harry



Henry



Krystle C





WHAT OUR STUDENTS SAY ABOUT US?

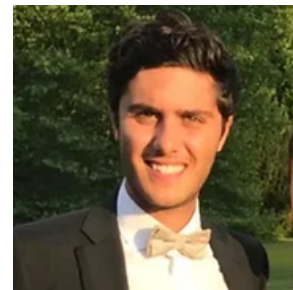
Andrea M



"Would highly recommend to Business/Finance majors looking to gain financial modelling experience as well as anyone who wants to break into the industry"



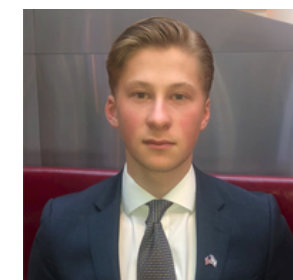
David T



"What stood out for me was the real world examples which made it engaging and relevant and the training brought it to life"



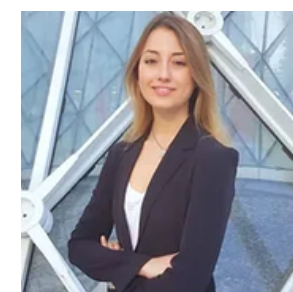
Joseph K



"The course is contemporary, using tangible, everyday examples to consolidate seemingly abstract concepts from accounting to financial modelling. This is a truly great and unique opportunity"



Carolina M



"I highly recommend it to anyone who wants to gain advanced technical skills and have real insight into what the industry is like. I now feel very confident about my skills and much more prepared walking into interviews"





WHAT OUR STUDENTS SAY ABOUT US?

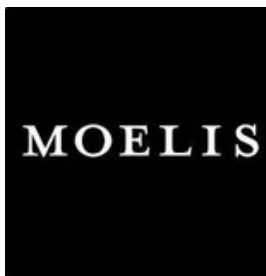
Tom C



I highly recommend the course for anyone trying to break into banking as it builds up the core foundations needed to separate yourself from the rest of the job candidates.



Amar P



"The theory and the application model of the course works very well. I think what that does is it allows us to walk into any analyst job feeling confident."



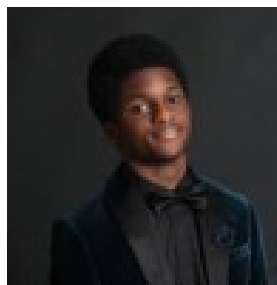
Tom K



I attended the 8 week course in July 2023. Within the first week after finishing I had secured 4 separate interviews with various IB / PE firms and later converted one into a full time role. Would highly recommend!



Nifemi



"Some of the proprietary knowledge we gain at City Investment Training such as the Goldman Sachs approach approach on pitching a stock in an interview was a game changer. This approach helped me land my first equity research summer internship at a bulge bracket bank."





WHERE OUR STUDENTS STUDIED?

United Kingdom

University of Oxford
University of Cambridge
London School of Economics
London Business School
University College London
University of Edinburgh
Kings College
University of Manchester
University of Durham
University of Warwick
University of Bristol
University of Newcastle
University of Nottingham
University of Birmingham
University of Exeter
University of Sheffield
City University
Bayes Business School
And many more...

United States

New York University
Harvard Business School
Georgetown University
North Eastern University
Columbia Business School
University of South California
Kellogg School of Management
George Washington Uni
University California, Berkeley
University of Pennsylvania
and many more...

Europe

IE Business School
ESADE Business School
Bocconi
Hanken
ESCP Europe
ESSEC Business School
...and many more



PLACEMENT DESTINATION

Our students have gone to work for some of the leading names in banking

Bulge Bracket

- Goldman Sachs
- JP Morgan
- UBS
- Morgan Stanley
- Deutsche Bank
- Credit Suisse (UBS)
- BNY Melon
- UBS
- Citigroup
- Bank of America
- Nomura
- HSBC
- BNP Paribas
- Société Générale
- ING
- PJT Partners
- Citi
- Barclays

Boutique/Mid-Market

- Houlihan Lokey
- Moelis
- Rothchild
- Berenberg
- FT Partners
- Lincoln
- Jefferies
- Piper Sandler
- Julius Baer
- Torch Partners
- Evercore
- STJ Advisors
- Oghma Partners
- AGC Partners
- SI Partners
- Alantra
- Raymond James
- Perella Weinberg
- and many others...

Private Equity/Asset Management

- Blackstone
- Bain Capital
- Hillgate Capital
- Qualitas
- Pelican Capital
- NorthStar
- Social Capital
- Goldman Sachs PE
- European Investment Fund
- Blackrock
- Schroders
- Wellington
- Aon
- Alanda Capital
- W.P. Carey
- Ares Mngmt
- BNP Paribas Fortis
- Fidelity



APPLICATION PROCESS

[Eligibility Calculator](#)



Take the Eligibility Score Assessment

- Start your journey by completing the “Banking Eligibility Calculator”
- **We are looking for a minimum of 40 on the eligibility calculator**

[JOIN WAITLIST](#)



Join the Waitlist -

- We will reach out for your CV is shortlisted



Phone/Face to Face Interview

- Final round interview with our CEO, Sameer Merchant



Receive Final Offer

- Successful candidates will receive an offer to join our program